
AN-520-AP-O

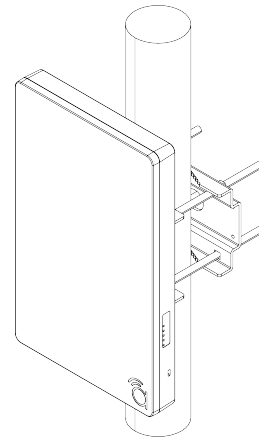
Outdoor Wi-Fi 6 Access Points

Welcome to Araknis Networks™

Thank you for choosing an Araknis Outdoor Wireless Access Point (AP). With sleek, unobtrusive housings, extensive features, unique easy setup, and convenient PoE power, these products are ideal for use in both residential and commercial applications.

Features

- IP55 weather resistant
- Versatile mounting
- Bottom or rear cable entrance
- Kensington lock hole for added security
- 2×2 dual-band 802.11AX 3000Mbps
- 1× 2.5 Gigabit PoE-in (no DC input)
 - IEEE 802.3at PoE+ (30W) required for power
- 1× 1 Gigabit LAN port out for data and PoE (15W)
 - IEEE 802.3bt PoE++ is required to pass PoE out
- OvrC enabled



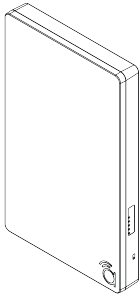
Caution: Install with the ports facing downward only to avoid water collecting in the ports.

Outdoor Installation Guidelines

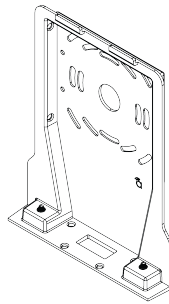
- For wall mount, position at least 24" (60cm) from eave or ceiling edges.
- Cable feed opening must be directed away from the open environment.
- Cable feed must be pointed down when wall-mounted.
- Shielded Cat 5 cable or above is recommended for outdoor installation and should be grounded through the AC ground of the PoE.
- Operating Temperature Range: -20-55° C
- Storage Temperature Range: -30-80° C

Caution: Install with the ports facing downward only to avoid water collecting in the ports.

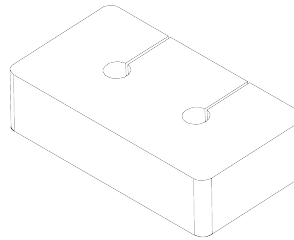
Unboxing



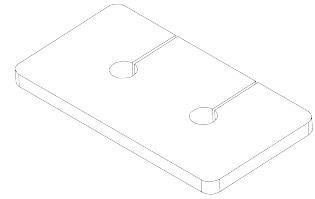
Access Point (AP)



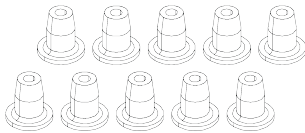
Mounting bracket



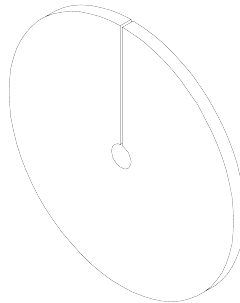
Inner foam cable
inserts (2*)



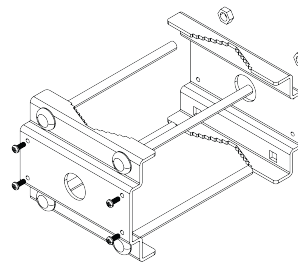
Bracket cable
inserts



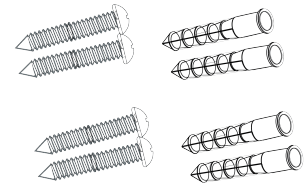
Rubber weep hole
plugs (10)



Rear bracket foam
inserts (2*)



AN-ACC-AP-O-
POLE Access pole
mount sold
separately

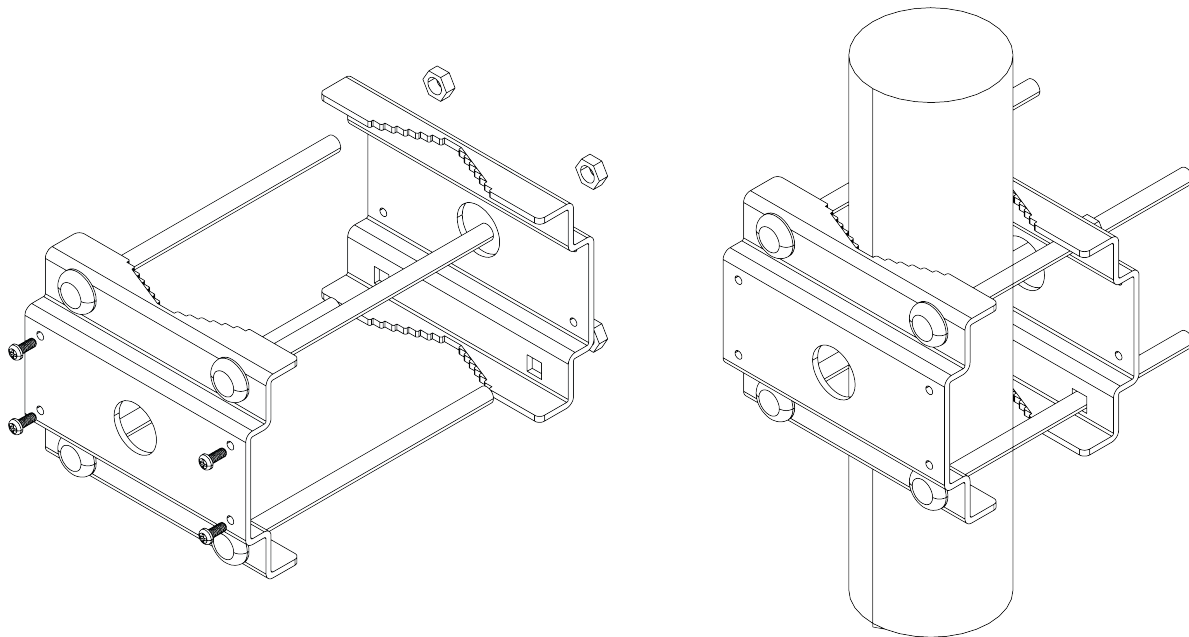


Wall mount
hardware (4 each
of screws &
anchors)

*Includes one gasket each for small or large diameter cables. Use the size that best fits your cable.

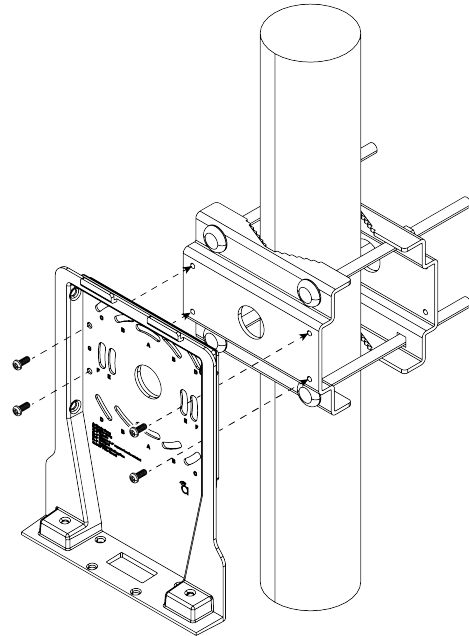
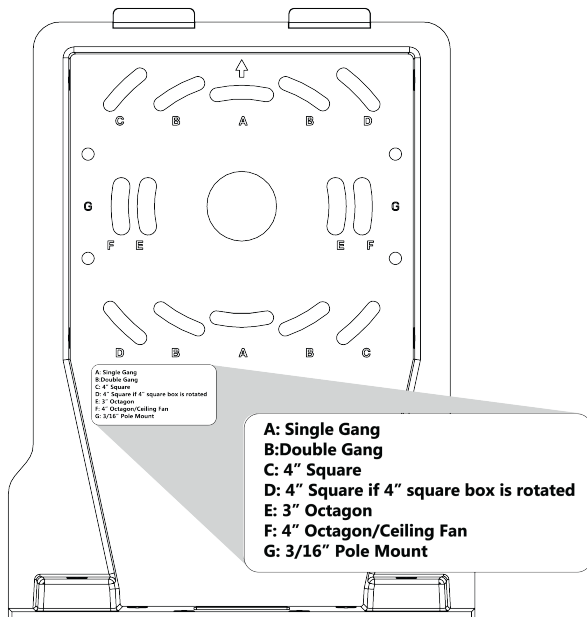
Optional installation of the pole mount accessory

The AN-ACC-AP-O-POLE accessory mount can be purchased separately and used to securely attach the access point to a pole 1.5-3.1" in diameter.



Tighten the clamp nuts enough to prevent unwanted side-to-side movement without damaging the pole or clamps.

Bracket Mounting

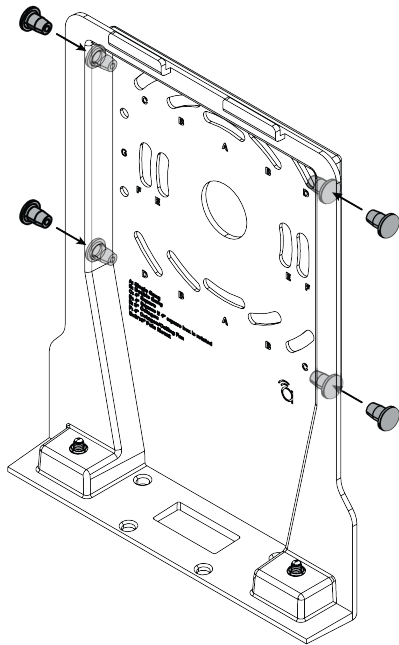


Pole mounting shown for reference. For surface mounting, fasten to the surface using the included screws and anchors.

Caution: Install with the ports facing downward only to avoid water collecting in the ports.

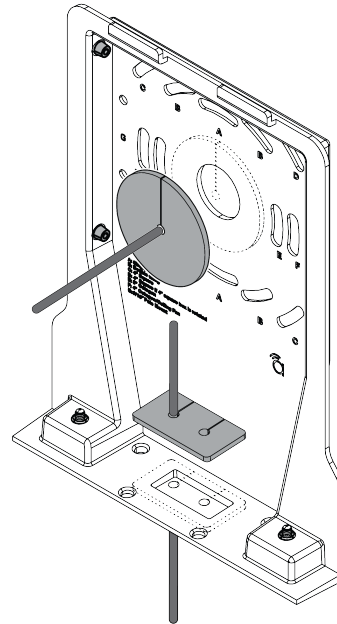
Weatherproofing

The weep hole plugs must be installed correctly.



Leave the bottom weep holes open for drainage.

Pull the cables through before installing the foam pieces to avoid tearing the foam.



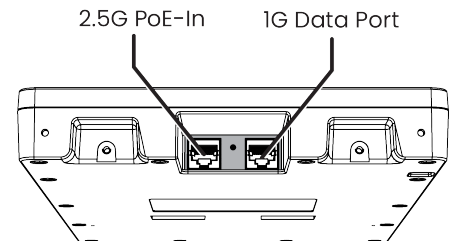
Caution: Use gaskets that best fit the cable diameter.

To ensure weatherproofing, insert the gasket even if the cable entrance is not used.

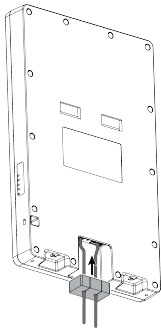
Connections

PoE specifications

- IEEE 802.3af PoE+ (30W) required for power.
- IEEE 802.3bt PoE++ is required to pass PoE out of the data port (15W)



Foam block installation



The foam block must be pushed to the back of the cable entrance with large holes facing connectors.

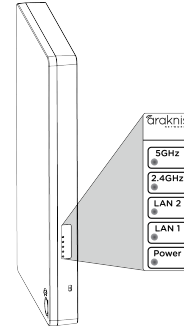
Remove the adhesive backing before installation.

Note: Leave the white dust cover in the Data Port if it is not being used. Use pliers to remove the dust cover.

LED operation

Verify the AP's operation with the Power LED.

AP state	Power LED color	Description
Operational	No LED	The AP is not powered on
	Solid white	The AP is in a startup process at the uboot stage
	Blinking white	The AP is in a startup process at the kernel stage
	Solid blue	The AP started correctly and is running in an operational state
	Blinking blue	The AP is operating but is underpowered
Environmental	Solid white	The heater is operating
Error	Blinking orange	The AP is not connected to the internet
	Blinking green	The AP is performing a firmware update
	Solid orange	The AP failed a firmware update and needs to be recovered
	Solid red	The AP is non-functional

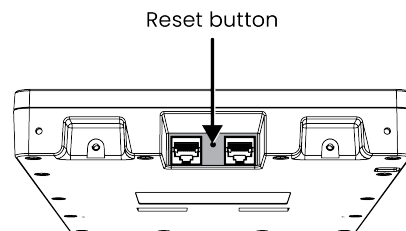


LEDs	LED state	Description
2.4 and	Off	The radio is disabled

LEDs	LED state	Description
5GHz		
	Solid blue	The radio is enabled
	Blinking blue	The radio is passing network packets
LAN1 and LAN2	Off	The AP is not connected to the internet
	Solid blue	The AP is performing a firmware updated
	Blinking blue	The AP failed a firmware update and needs to be recovered

Reset procedures

The reset button is in the AP's cable bay.



Reset button action	LED state	Description
Hold the reset button for 1-9 seconds	Blinking green	Restarts the AP
Hold the reset button for 10-19 seconds*	Blinking orange	Resets the username and password only
Hold the reset button for more than 20 seconds	Blinking red	Resets the AP to factory defaults

* This action is only available when the Reset Password toggle is disabled in the web interface.

Configuration

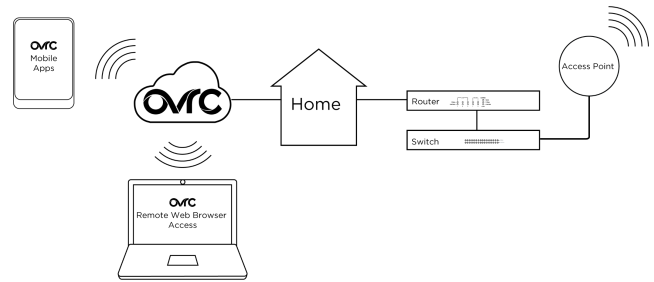
Araknis APs can be configured through OvrC or the local interface. The local interface is accessible using OvrC's webconnect feature, typing the AP's DHCP address into your browser's address bar, or using the AP's default IP address.

Configuring the AP in OvrC

OvrC provides Wi-Fi management, remote device management, real-time notifications, and intuitive customer management, using your computer or mobile device. Setup is plug-and-play, with no port forwarding or DDNS address required.

To add this device to your OvrC account:

1. Connect the AP to the internet
2. Log into OvrC (www.ovrc.com)
3. Scan the site using an OvrC Pro device, or add the AP manually by entering the MAC address and Service Tag.
4. [Click here](#) for our article on *Getting Started With OvrC Wi-Fi Management*.



Logging into the Web Interface

1. Log into the AP using the default credentials:

Username	araknis
Password	araknis

2. You must update the password after initial login.

Pro Tip: Strong passwords are long and unrelated to the client's public details. For example, thepepperonipizzas is stronger and easier to remember than P@ssword or thesmiths.

Saving and Applying Changes

1. Click the **Save** button after applying changes to a page. This holds the new settings in the Apply Changes field.

2. After all desired changes have been made, click the flashing **Apply Changes** button, at the bottom of the left menu, to review the new settings. Click **Apply** to make the changes or **Revert** to cancel the changes.

The screenshot shows the Snap One network management interface. On the left is a dark sidebar menu with icons and labels for 'Status' (with a green checkmark), 'Settings' (with a green list icon), 'Maintenance' (with a green wrench icon), and 'Advanced' (with a green gear icon). Under 'Status' are 'System' and 'Wireless Interface'. Under 'Settings' are 'System', 'LAN', 'Wireless', 'Security', and 'Schedule'. Under 'Maintenance' are 'Ping', 'Traceroute', 'File Management', 'Restart', and 'Log Out'. At the bottom of the sidebar is a red button labeled 'Apply Changes: 8'. The main content area has a light blue header with the text 'APPLY CHANGES'. Below this is a section titled 'Unsaved' containing a box labeled 'Unsaved changes list' with the following text: `dhcp.guest.ignore=0`, `wireless.wifi1_ssid_1.disabled=0`, `wireless.wifi0_ssid_1.disabled=0`, `wireless.wifi1_guest.disabled=0`, `wireless.wifi1_guest.key=noleasedont`, `wireless.wifi1_guest.encryption=psk2+ccmp`, `wireless.wifi0.enlist=1,1`, and `wireless.wifi1.enlist=1,0,1`. At the bottom right of the main area are two green buttons: 'Apply' and 'Revert'.

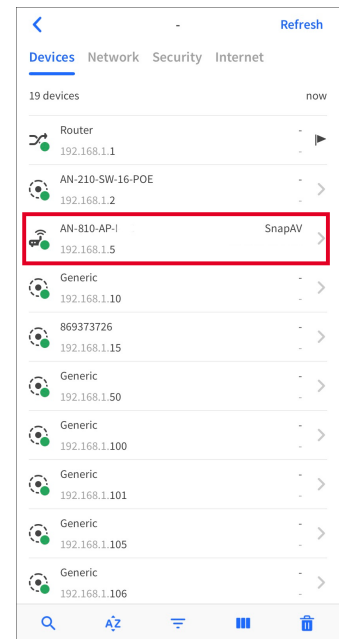
Note: Settings take effect after the progress bar reaches 100%.

Other Access Methods: DHCP IP Address

The WAP is configured to DHCP by default so that the DHCP server can assign an IP address when the AP is connected to the network (the DHCP server is usually the router). This address can be used for accessing the web interface.

Use one of these methods to find the IP address of the AP:

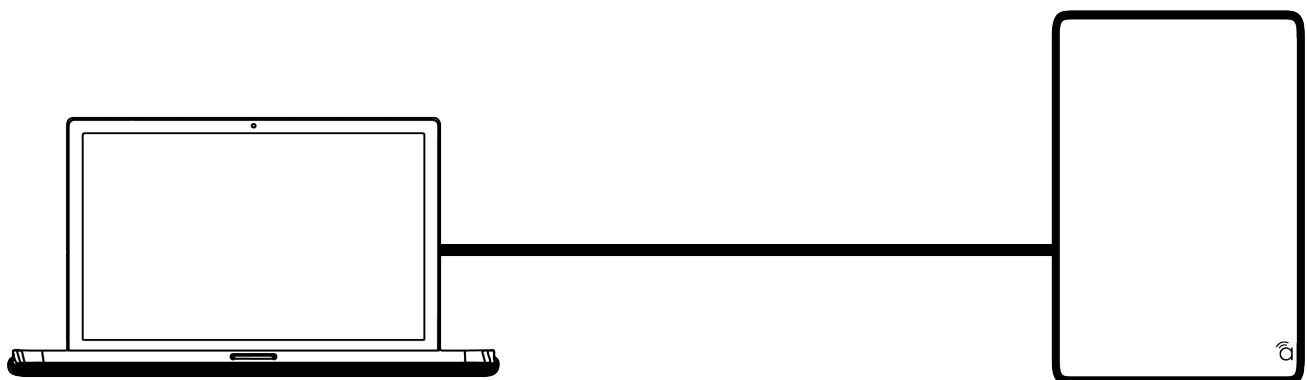
- Check the device list in OvrC.
- Check the client table on your router.
- Use a network scanner (e.g. Fing) to scan the network. The Araknis WAP manufacturer field displays SnapAV.
- See the highlighted field in the Fing screenshot to the right for an example of an Araknis device being identified.



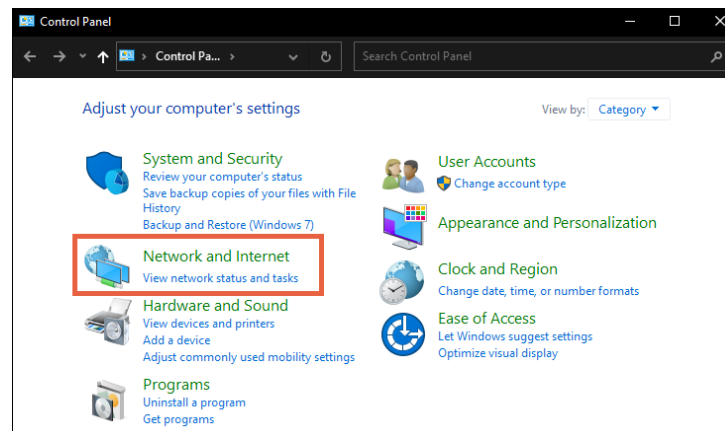
Accessing the AP Using the Default IP Address

If the AP is not given a DHCP address, or needs to be accessed while not connected to a network, you can configure your computer's network connection to access the AP using the default IP address, **192.168.20.253**.

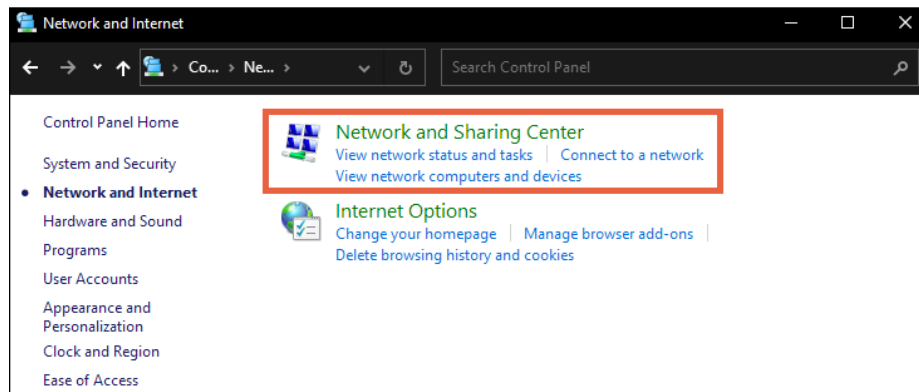
Step 1: Connect your PC to the AP using an Ethernet cable.



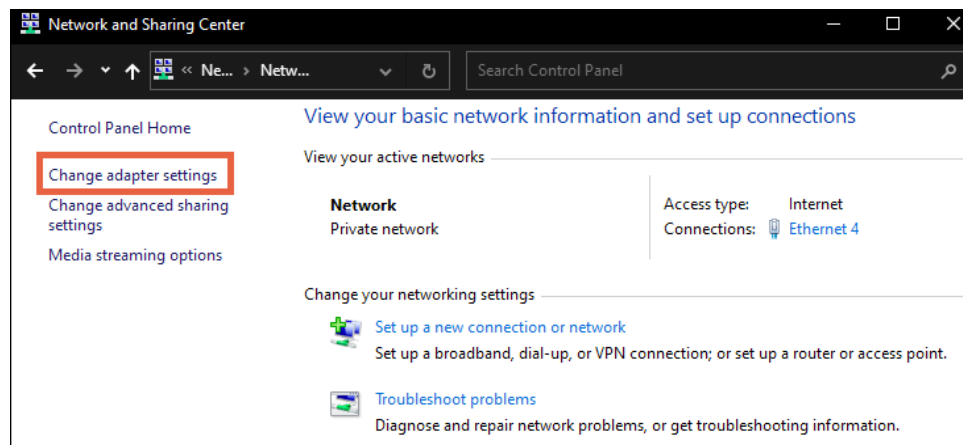
Step 2: Open the Control Panel and click Network and Internet.



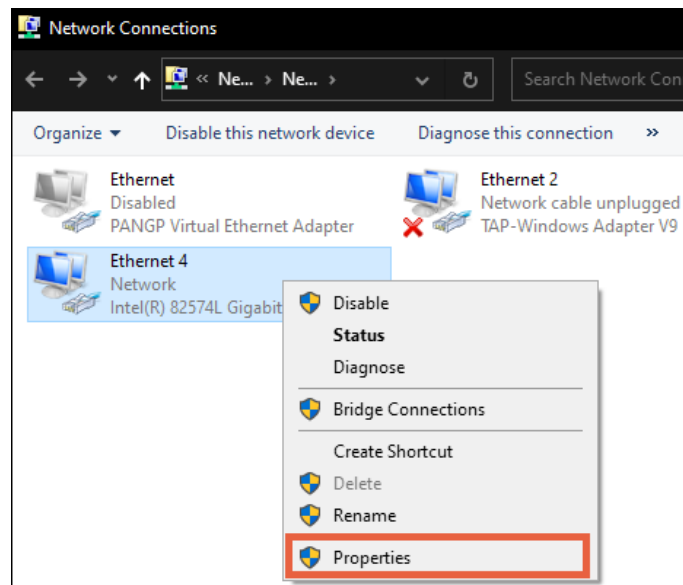
Step 3: Click Network and Sharing Center.



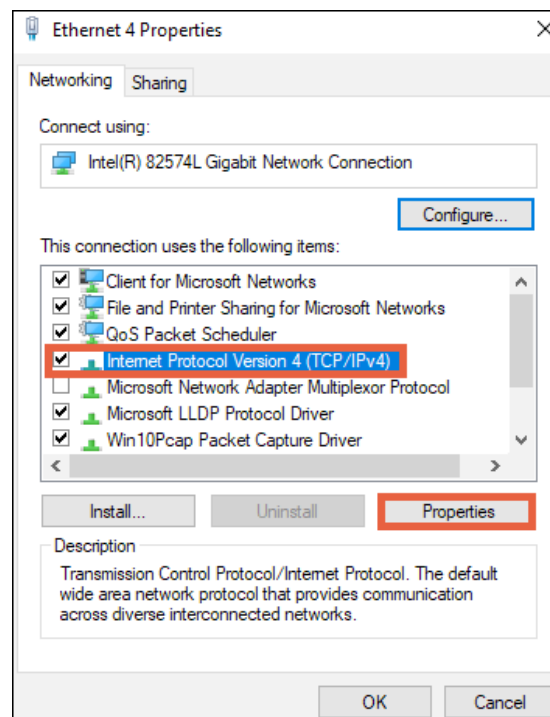
Step 4: Click Change adapter settings.



Step 5: Right-click the icon for the wired network connection, then left-click **Properties**.

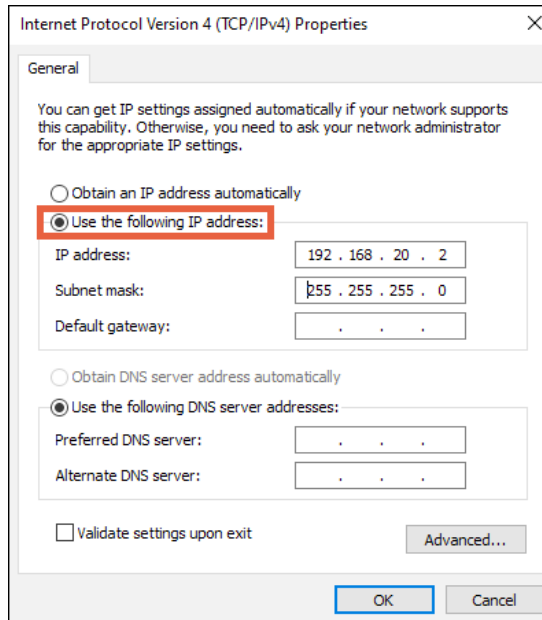


Step 6: Select Internet Protocol Version 4 (TCP/IPv4), then click **Properties**.



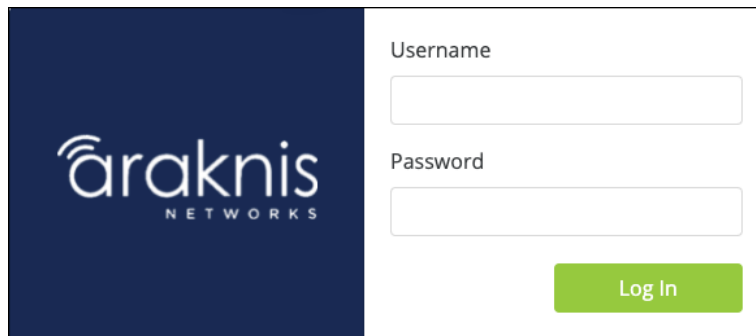
Step 7: In the General tab, click Use the following IP address: and enter the IP address and subnet mask, then click OK.

IP Address	192.168.20.2
Subnet Mask	255.255.255.0

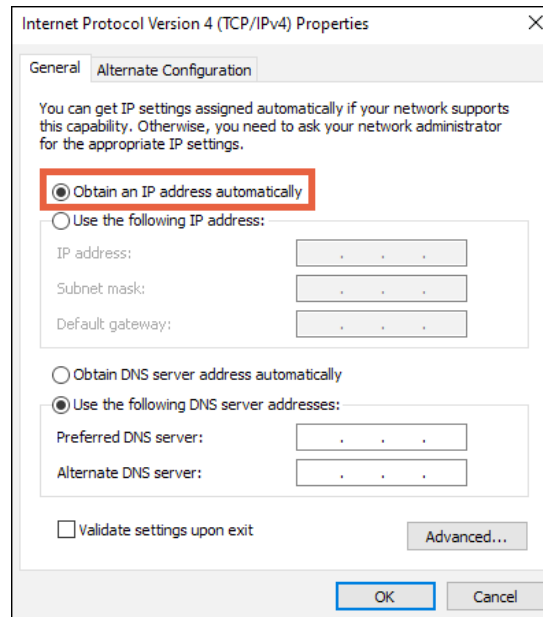


Step 8: Open a browser and navigate to <https://192.168.20.253/>. Log in using the default credentials:

Username	araknis
Password	araknis



Step 9: After configuring the AP, set your computer's IPv4 Properties back to **Obtain an IP address automatically**, then click **OK**.



Technical Support

For chat and telephone, visit snpl.co/techsupport • Email:

TechSupport@SnapOne.com. Visit snpl.co/tc for discussions, instructional videos, news, and more.

Warranty and Legal Notices

Find details of the product's Limited Warranty and other resources such as regulatory notices and patent and safety information, at snapone.com/legal or request a paper copy from Customer Service at **866.424.4489**.

2023, Snap One, LLC. All rights reserved. Snap One and its respective logos are registered trademarks or trademarks of Snap One, LLC (formerly known as Wirepath Home Systems, LLC), in the United States and/or other countries. 4Store, 4Sight, Control4, Control4 My Home, SnapAV, Araknis Networks, BakPak, Binary, Dragonfly, Episode, Luma, Mockupancy, Nearus, NEEO, Optiview, OvrC, Pakedge, Sense, Strong, Strong Evolve, Strong VersaBox, SunBriteDS, SunBriteTV, Triad, Truvision, Visualint, WattBox, Wirepath, and Wirepath ONE are also registered trademarks or trademarks of Snap One, LLC. Other names and brands may be claimed as the property of their respective owners. Snap One makes no claim that the information contained herein covers all installation scenarios and contingencies, or product use risks. Information within this specification subject to change without notice.

230620

AN-X20-AP-A