



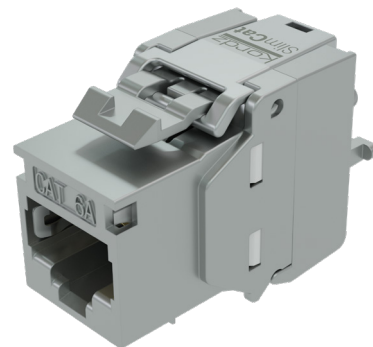
Technical Data Sheet

PRS SlimCat™ Cat6A Keystone RJ45 Socket

Makes installation easier

The Kordz PRS SlimCat™ Cat6A Keystone RJ45 Socket is designed specifically for use with the Kordz PRS SlimCat™ Cat6A Network Cable, enabling professional integrators to deliver ANSI/TIA-568.2-D Cat6A permanent link performance up to 50 metres. Additionally, the product is UL94 V-0 fire-rated and factory tested to support PoE++ at 100W. Featuring a die-cast zinc-alloy metallic clamshell design and metal latching mechanism which is the same as the Kordz PRS Keystone RJ45 Sockets, Kordz PRS SlimCat™ Keystone makes installation easier and fit standard keystone panel cut outs. Match with other Kordz PRS SlimCat™ Cat6A components for a complete Kordz ecosystem that delivers 'Connectivity Assured'.

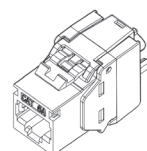
- Enables delivery of ANSI/TIA-568.2-D Cat6A permanent link performance up to 50m when paired with Kordz PRS SlimCat™ Cat6A Network Cables
- Contacts and wire manager customised for 28AWG conductors
- Easy to terminate with metal latching mechanism
- die-cast zinc-alloy metallic clamshell design
- IEEE802.3bt 100W PoE++ capable
- UL94 V-0 fire-rated
- Eco-friendly packaging
- Manufactured with quality materials and using advanced manufacturing methods
- Lifetime warranty



Technical Specifications			
General Specifications		Dimensions	
Guaranteed Performance Category	Category 6A	Body Length	37.65mm 1.48in
Applicable Performance Standards	ANSI/TIA-568-C.2 / ISO/IEC 11802	Body Width	17.10mm 0.67in
Power over Ethernet Performance	PoE++ (max 100W)	Body Height	23.64mm 0.93in
Power over Ethernet Tested Standards	IEEE802.3bt	Panel Cut-out Height (recommended)	16.10mm 0.63in
Shielding Type	Shielded	Panel Cut-out Width (recommended)	14.50mm 0.57in
Wiring method	T568A T568B		
Mechanical Specifications			
Housing material	Polycarbonate		
Flammability Rating	UL 94 V-0		
Housing Colour	White / Black		
Front connection (RJ45 socket)	Termination method		RJ45 socket
	Contact material		phosphor bronze
	Contact plating		50µ" Gold Plating
	Insertion durability		≥ 750 insertions
	Plug retention force		133N 13.3kg 30lb
Rear connection (IDC side)	Termination method	IDC (Insulation Displacement Contact)	
	Compatible insulated conductor gauge		28AWG
	Compatible cable diameter		5.5mm
	Contact material		Phospher bronze
	Contact plating		100µ" Tin Plated
Insertion IDC	Termination durability		≥ 20 terminations
Operating Temperature			-40° to 66°C
Electrical Specifications	Requirement (per IEC 60603-7-4)	Tested Limit	
Voltage/Current rating UL Applications	125 Volts AC / 1.5 Amps	125 Volts AC / 1.5 Amps	
Dielectric Withstanding Voltage	1000 Volts DC / AC Peak	1000 Volts DC / AC Peak	
Contact Resistance	200mΩ minimum	≤ 20mΩ	
Insulation Resistance	500MΩ	≥ 500MΩ	
Current carrving capacity		1A at 50°C	

Packaging	
Packaging type	Box
Items per bag	12 pcs / box
Box size	138mm(W)*123mm(H)*50mm(G)
Master carton quantity	20 boxes
Master carton size	267mm(L)*297mm(W)*280mm(H)

Part No	Part No	Master Ctn Box Qty
T3R48J-C6AS-ME	1 box / 12 pcs	20



Kordz products are sold with a limited warranty as outlined at: www.kordz.com
©2023 Kordz International. All rights reserved. Kordz Connectivity Assured & Kordz range logos are trademarks or registered trademarks of Kordz International in Hong Kong and in other countries. All other trademarks are the property of their respective owners.