

## Full HD Repositionable Dome IP Camera

### FOR INTERNAL/EXTERNAL APPLICATIONS

- Full HD 1080p 30fps
- H.264 and MJPEG Compression
- True Day/Night and WDR
- Repositionable (not a PTZ)
- Preset Positions – 16 with preset analytic positions
- Embedded Video Analytics
- Micro SD/SDHC Memory Card Slot
- Power-Over Ethernet (IEEE 802.3af)



Indoor

Indoor/Outdoor

CAMERA	
Model	<b>VI-6100:</b> Indoor, remote pan/tilt/zoom <b>VI-6200:</b> Outdoor, remote pan/tilt/zoom
Image Sensor	1/2 7" 1080p CMOS
Effective Pixels	1920 x 1080
Scanning System	Progressive scanning
AGC Control	Auto
Auto IRIS (DC)	DC Auto Iris
Minimum Illumination	Color: 0.5 Lux/B/W: 0.001 Lux (DSS ON)
Lens	3.0(w) – 9.0mm(t), F1.2(w) – F2.1(t), Optical 3x, Motorized Focus & zoom lens
Angle of View	Horizontal: Approx. 93° (Wide) to 31.7° (Tele) Vertical: Approx. 68.4° (Wide) to 23.8° (Tele)
Shutter Time	1/2000s to 1/2s
Day & Night	True Day & Night (Removable IR-cut filter)
Wide Dynamic Range (WDR)	Digital WDR

VIDEO	
Video Compression	H.264 Baseline, Main, High profile (MPEG-4 Part 10/ AVC), MJPEG(Motion JPEG)
Video Streaming	Dual Stream, Configurable streams in H.264, MJPEG H.264: Controllable frame rate, bandwidth (VBR/CBR) MJPEG: Controllable frame rate, JPEG quality
Resolutions	1920 x 1080, 1280 x 720, 800 x 450, 480 x 270, 320 x 180
Frame Rate	H.264: Max 30fps in all resolution MJPEG: Max 30fps in all resolution
Image Settings	Configurable brightness, contrast, saturation, sharpness
Orientation Control	Flip & Mirror
Noise Filter	Supported (0 ~ 3)
Smart Bitrate Control	Supported (It works in VBR mode)
Exposure Adjustment	+1.0, +0.6, +0.3, 0, -0.3, -0.6, -1.0 EV
White Balance	ATW1/ATW2/Push/Manual
Back Light Compensation	On (possible to designate zone)/Off
Flicker Control	Normal, 50Hz, 60Hz
DSS (Sens-up)	2X ~ 16X
Burnt-In Text	Time stamp and text caption overlay
Privacy Mask*	-
Analogue Output	NTSC/PAL (only for installation purpose)

AUDIO	
Audio Streaming	Two-way
Audio Compression	G.711-uLaw
Audio Input/Output	Supported

NETWORK	
Ethernet Standard	10/100 Base-T
Protocol	QoS Layer 3 DiffServ, TCP/IP, UDP/IP, HTTP, RTSP, RTP, RTP/UDP, RTP/TCP, mDNS, UPnP™, SMTP, DHCP, DNS, DynDNS, NTP, SNMPv1/v2c/v3 (MIB-II), IGMP, ICMP, SSLv2/v3, TLSv1
Security	Multi-level access with password protection

REPOSITIONING	
Zoom Ratio	Optical 3x
Pan/Tilt Range	Pan Range: 0° ~ 355° Tilt Range: 0° ~ 80°
Repositioning Preset	16 named presets (pre-stored position)

GENERAL	
Material	<b>VI-6100:</b> Aluminum Die-Casting; White <b>VI-6200:</b> Aluminum Die-Casting; White
Edge Storage	1x MicroSD/MicroSDHC memory card slot (card not included)**
External I/O Terminals	1x Alarm In, 1x Alarm Out
Users	Live viewing for up to 10 clients
Power Source/Consumption	<b>VI-6100:</b> DC 12V, AC 24V, PoE/8.64W <b>VI-6200:</b> DC 12V, AC24V
Operating Conditions	Humidity up to 85% RH (non-condensing) <b>VI-6100:</b> [DC12V/AC24V/PoE] 0°C ~ 50°C (32°F ~ 122°F) <b>VI-6200:</b> [DC12V/AC24V] -20°C ~ 50°C (-4°F ~ 122°F); [PoE] 0°C ~ 50°C (32°F ~ 122°F); Built-in fan and heater Cold Start
Approvals	<b>VI-6100:</b> FCC, CE <b>VI-6200:</b> FCC, CE, IP66, IK10
Weight	<b>VI-6100:</b> 1.2kg <b>VI-6200:</b> 1.6kg

VIDEO ANALYTICS	
Analytics Engine	Advanced tracking algorithm with rich library of detection behaviors
Detection Zones and Rules	40 zones (Multi-segment polygons and lines) in total 60 rules in total
Tamper Detection	Supported
Camera Shake Cancellation	Supported*
Auto Tracking	-
VCA Preset	16 Analytic Presets: An analytic rule or rules can be assigned to separate preset position***

VIDEO ANALYTICS (Optional Features)	
Detection Behavior	Enter, exit, appear, disappear, stop, direction, dwell filter, tailgating
3D Behavior	Perspective corrected size and speed filters
Counting	20 counters in total
Counting Line	High accuracy people and vehicle counting
Meta Data	Plain XML format

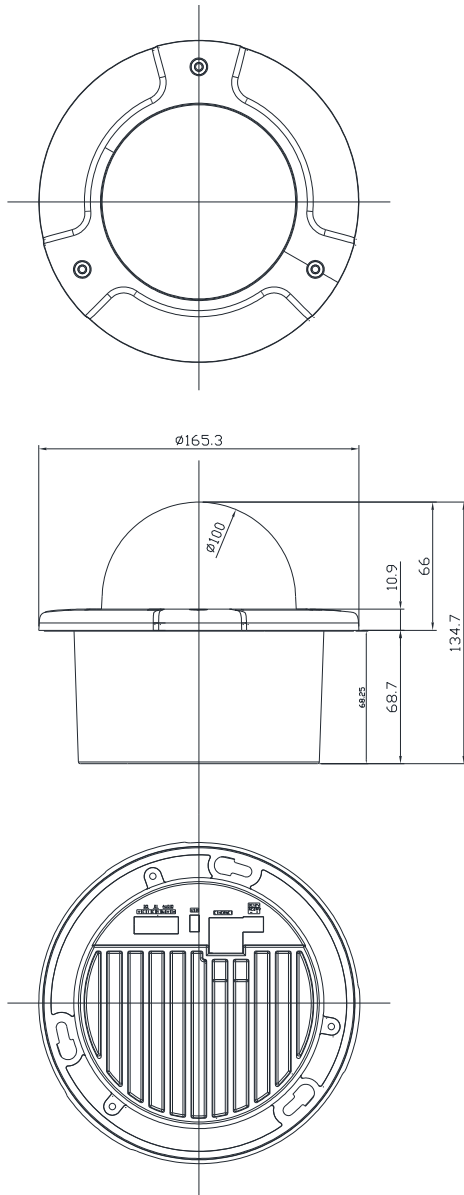
Preliminary Version Data subject to change without notice.

\*Please check firmware status. \*\*Class4 or higher SD cards are recommended for HD recording.

\*\*\*Maximum of 60 zones, 40 rules, 20 count lines between the 16 presets.

## Dimensions (Unit: mm)

[Indoor]



[Indoor/Outdoor]

