

MURIDEO®

MURIDEO 4K HDMI DUAL TEST MONITOR

18Gbps 4K HDR HDMI
Input Dual Test Monitor
with Analyzer Functions

Murideo's Dual Screen Field Test Monitor comes with two seven-inch monitors built to display and test 4K signals up to 18Gbps. This compact device fits perfectly in the rack with its HDMI loop out port that will pass along any 4K signal. This means integrators can install it at the rack, loop out to different zones, and ensure the source is working properly by visually seeing the signal being distributed.

As part of the Murideo testing and troubleshooting family, you know the standards are the highest in the industry. This monitor offers signal analyzer information such as resolution, color space, HDCP, HDR confidence, and audio type analysis.

Mount it locally in a rack for an extremely high-end, clean install. No matter how you use it, hunting down HDMI issues just got a lot easier with Murideo's HDMI 4K Test Monitor.

BENEFITS:

- **18Gbps Signals:** The ability to view HDMI signals up to 18Gbps (4096x2160P60 4:4:4) allows you to use this monitor with every single consumer source on the market.
- **Rack Mountable:** This powerhouse monitor was built to give integrators the info they need without physically being in each zone. Ideal for use in the field when monitoring the signal during maintenance cycles, but doesn't add a ton of heat.
- **EDID Management:** This test monitor reads and writes EDIDs with advanced EDID analysis and tools. You can set EDID from a list of top EDIDs, but also have the ability to load your own.

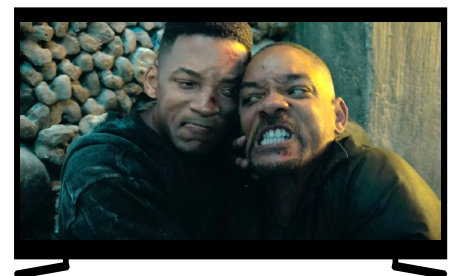


HDMI LOOP OUT APPLICATION DIAGRAM

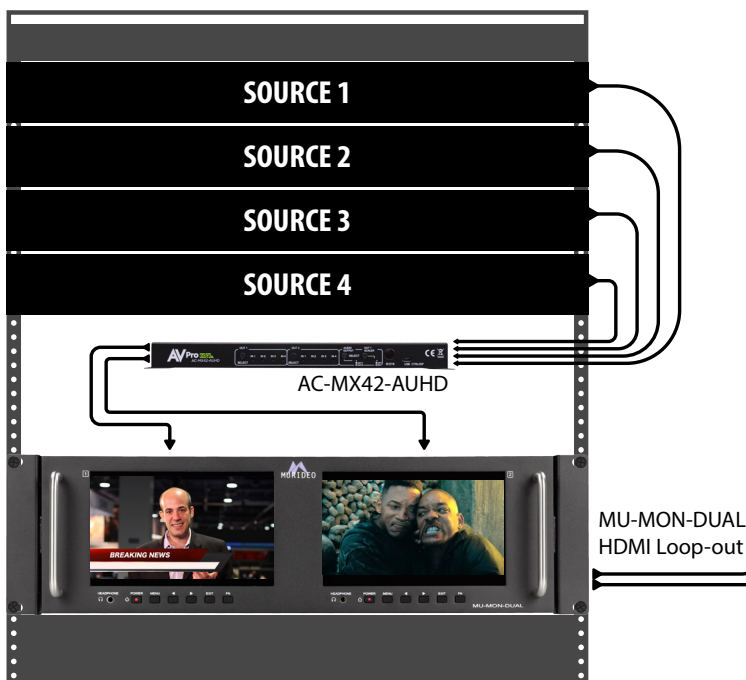
MU-MON-DUAL

HDMI

4K DISPLAY



4K DISPLAY



MURIDEO®

MURIDEO 4K HDMI DUAL TEST MONITOR

18Gbps 4K HDR HDMI
Input Dual Test Monitor
with Analyzer Functions



VIDEO:

| | |
|--------------------------------|--|
| HDMI VERSION | HDMI 2.0 |
| HDCP VERSION | HDCP 2.2 AND 1.4 |
| MAXIMUM CLOCK RATE | 600 Mcsc (594 MHz) |
| MAXIMUM THROUGHPUT PER CHANNEL | 6.0 GBITS/SEC (18 GBP/SEC TOTAL) |
| RESOLUTION TIMINGS | ALL VESA; VIDEO STANDARD WITH 60, 59.94, 30, 29.97, 24, 23.98, FPS; VIDEO STANDARD WITH 50, 25 FPS; SMPTE 4K TIMINGS (4096x2160); UHD 4K TIMINGS (3840x2160) |
| VIDEO ENCODING | RGB, YCbCr |
| VIDEO SAMPLING MODELS | RGB 4:4:4, YUV 4:4:4, YUV 4:2:2, YUV 4:2:0 HDMI 2.0 |
| COLOR BIT DEPTH | 8, 10, 12, 16, AND AUTO EDID READ |

AUDIO:

| | |
|-------------------------|---------------------------------|
| AUDIO TYPE | LPCM |
| AUDIO SAMPLING RATE | 32k, 44.1k, 48k, 88k, 96k, 176k |
| AUDIO SAMPLING BIT SIZE | 16, 20, 24, AUTO |
| AUDIO CHANNELS | 2 |
| AUDIO VOLUME | YES |

PORTS:

| | |
|----------------------------------|----------------------------|
| HDMI (INPUT AND MIRRORED OUTPUT) | TYPE A |
| AUDIO (3.5MM HEADPHONE) | 3.5MM STEREO (3-CONDUCTOR) |
| FIRMWARE | USB |

ENVIRONMENTAL:

| | |
|-----------------------|----------------------------|
| OPERATING TEMPERATURE | 23 TO 125°F (-5 TO 51°C) |
| STORAGE TEMPERATURE | -4 TO 140°F (-20 TO 60°C) |
| HUMIDITY RANGE | 5-90% RH (NO CONDENSATION) |

POWER:

| | |
|---------------------------|---|
| POWER | 12V WALL ADAPTER |
| POWER CONSUMPTION (TOTAL) | 12 WATTS MAX |
| POWER SUPPLY | INPUT: AC 100-240V ~ 50/60HZ OUTPUT: DC 12V 2A |

DIMENSIONS:

| | |
|---|---|
| DIMENSIONS (UNIT ONLY HEIGHT/DEPTH/WIDTH) | MM: 133.4 x 37.34 x 228.6 INCH: 5.25 x 1.47 x 9 |
| DIMENSIONS (PACKAGED HEIGHT/DEPTH/WIDTH) | MM: 120.7 x 177.8 x 254.1 INCH: 4.75 x 7 x 25.75 |
| WEIGHT (UNIT) | 5 LBS/2.27 KG |
| WEIGHT (PACKAGED) | 7 LBS/3.18 KG |

*SPECIFICATIONS SUBJECT TO CHANGE WITHOUT NOTICE. MASS & DIMENSIONS ARE APPROXIMATE

