

PROFESSIONAL AUDIO/VIDEO

SOLUTIONS BY AVPRO

ConferX™

BY AVProedge

AC-CX62-AUHD

6 INPUT, 2 OUTPUT MULTI-FORMAT HDMI
& HDBaseT CLASSROOM/CONFERENCE
ROOM MATRIX

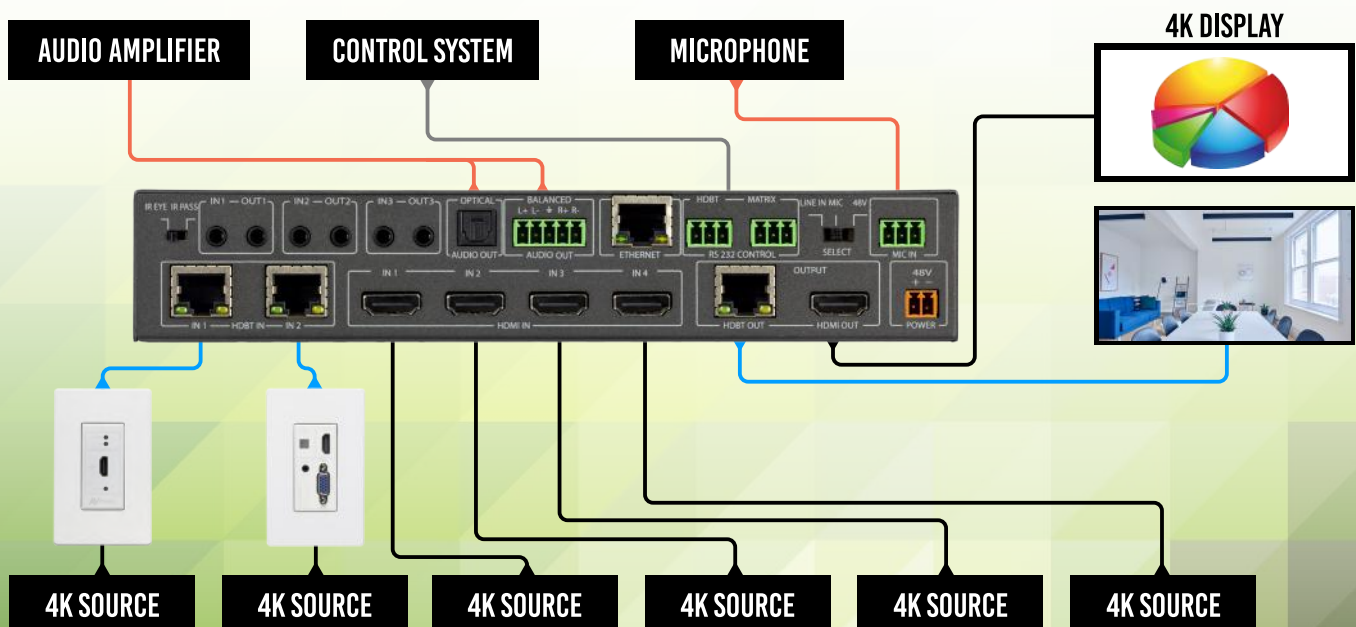


The ConferX 6x2 Matrix Switcher is the ideal solution for any conference room, classroom or huddle space. This 4K switcher can display any of the six sources through both the HDBaseT and HDMI output port. Each of these outputs are completely independent of each other allowing the user to show two sources at the same time. With additional audio inputs and outputs, working with a microphone or intercom system will not be a problem. With two HDBaseT inputs this switch works alongside two ConferX Wall Plate Transmitters at the same time. You can have Mini DisplayPort, HDMI, VGA or USB-C inputs located up to 100 meters away from the unit. This allows a teacher or presenter to use their laptop directly at the podium or presenters' station without having to connect anything to the matrix switcher. The AC-CX62-AUHD gives any end user a simplified experience for sharing their ideas inside a classroom, conference room or huddle space. When you need a stable solution for video distribution, look to the entire line of ConferX products.



AC-CX62-AUHD CONNECTION DIAGRAM

HDMI	—
CAT 6A	—
AUDIO	—
RS-232	—



PROFESSIONAL AUDIO/VIDEO

SOLUTIONS BY AVPRO

ConferX™

BY

AVPro edge



AC-CX62-AUHD PRODUCT SPECIFICATIONS

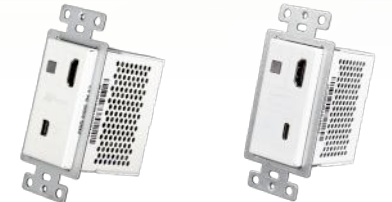
HDMI IN	
VIDEO RESOLUTIONS	UP TO 4K60 4:2:0 & 4K30 4:4:4
VESA RESOLUTIONS	UP TO 2560X2048 (QSXGA)
HDR FORMATS/RESOLUTIONS	4K24 4:2:2 12 BIT, 4K24 4:2:0 10 BIT
COLOR SPACE	YUV (COMPONENT), RGB (CSC: REC. 601, REC. 709, BT2020, DCI, P3 D6500)
CHROMA SUBSAMPLING	4:4:4, 4:2:2, 4:2:0 SUPPORTED
DEEP COLOR	UP TO 16 BIT (1080), UP TO 12 BIT (4K)
AUDIO	
AUDIO FORMATS SUPPORTED HDMI	PCM 2.0 CH, LPCM 5.1 & 7.1, DOLBY DIGITAL, DTS 5.1, DOLBY DIGITAL PLUS, DOLBY TRUEHD, DTS-HD MASTER AUDIO, DTS-X, DOLBY ATMOS
AUDIO FORMATS SUPPORTED EXTRACTED (TOSLINK)	PCM 2.0 CH, LPCM 6CH, LPCM 7CH, DOLBY DIGITAL, DOLBY DIGITAL PLUS, DTS MASTER AUDIO
AUDIO FORMATS SUPPORTED EXTRACTED (2CH)	PCM 2CH
DISTANCE	
HDMI LEAD IN/OUT (4K60 4:4:4)	UP TO 50 FEET (USING BULLET TRAIN HDMI)
HDMI LEAD IN/OUT (W/ AOC CABLE) (4K60 4:4:4)	UP TO 2130 FEET (USING BULLET TRAIN AOC)
HDBaseT (CAT) DISTANCE 1080P	100M (330 FEET) (WITH CAT 6A/7)
HDBaseT (CAT) DISTANCE 4K & HDR	70M (230 FEET) (WITH CAT6A/7)
OTHER	
BANDWIDTH (HDMI)	18 GBPS
BANDWIDTH (HDBT)	10.2 GBPS (18GBPS W/ICT AND AC-EX70-444-RNE)
HDCP	HDCP 2.2 AND EARLIER
PORTS	
HDMI (INPUT)	TYPE A
HDBaseT (INPUT)	RJ45
AUDIO (EXTRACTED DIGITAL)	TOSLINK
AUDIO (EXTRACTED ANALOG)	BALANCED L/R AUDIO (5 PIN TERMINAL BLOCK)
IR	3.5MM IR IN/OUT AND IR WINDOW ON THE FRONT
RS232	3 PIN TERMINAL BLOCK
CONTROL	
PORTS	LAN, RS232, IR WINDOW
LAN WEBO	YES
ENVIRONMENT	
OPERATING TEMPRATURE	23 TO 125°F (-5 TO 51°C)
STORAGE TEMPERATURE	-4 TO 140°F (-20 TO 60°C)
HUMIDITY RANGE	5-90% RH (NO CONDENSATION)
POWER	
POWER CONSUMPTION (MAX)	12 WATTS MAX
POWER SUPPLY	INPUT: AC 100-240V ~ 50/60HZ OUTPUT: DC 48V 0.5A
DIMENSIONS	
DIMENSIONS (UNIT ONLY LENGTH/DEPTH/HEIGHT)	MM: 220.7 X 158.8 X 41.4 INCH: 8.69 X 6.25 X 1.63
DIMENSIONS (PACKAGED LENGTH/DEPTH/HEIGHT)	MM: 397 X 222 X 95.3 INCH: 15.63 X 8.75 X 3.75
WEIGHT (PACKAGED)	3.8 LBS (1.72 KG)

*SPECIFICATIONS SUBJECT TO CHANGE WITHOUT NOTICE. MASS & DIMENSIONS ARE APPROXIMATE

PACKAGE CONTENTS:



COMPATIBLE TRANSMITTERS:



AC-CXWP-MDP-T

AC-CXWP-USBC-T



AC-CXWP-VGA-T

AC-CXWP-HDMI-T



AC-EX100-UHD-T

AC-EX100TT-UHD-T

COMPATIBLE RECEIVERS:



AC-EX100-UHD-R3

AC-EX70-UHD-R



AC-EX70-444-RNE