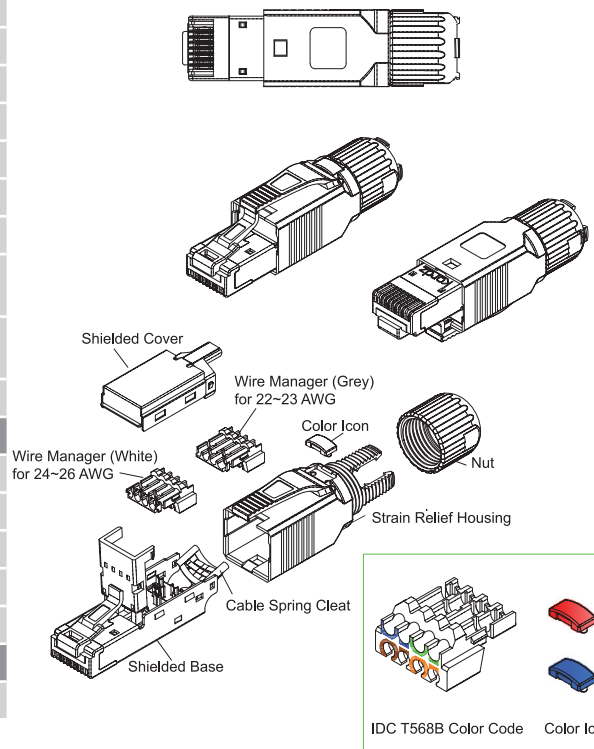
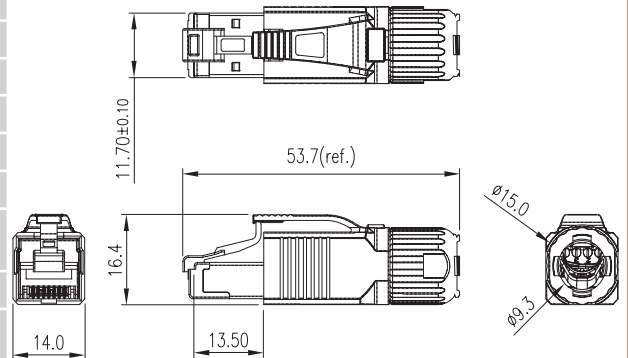
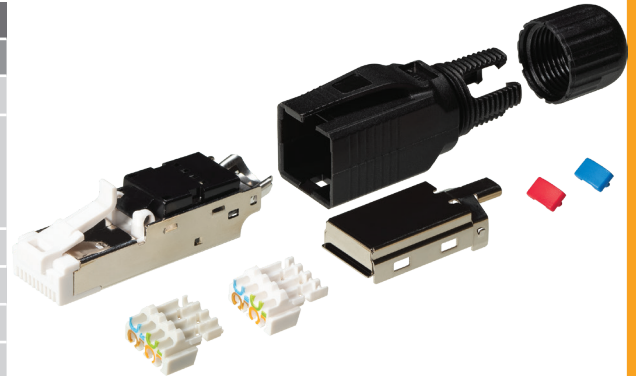
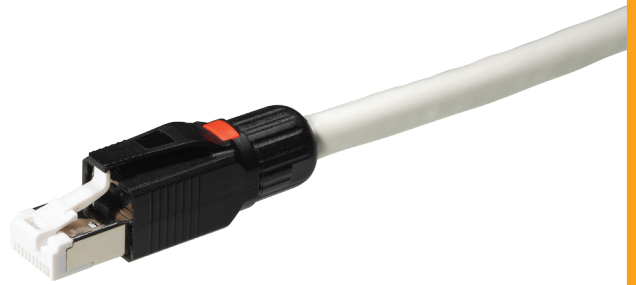


# ONE RJ45 CAT6a Field Termination Connector

The Kordz Category 6a Shielded Field Termination RJ45 Connector offers easy, toolless termination and complies fully with ISO/IEC 11801 2.2 Edition Category 6a and ANSI/TIA-568-C.2 Category 6A standards for applications up to 10GBase-T Ethernet and frequencies up to 500Mhz. It offers a fully shielded brass nickel plated base, bronze nickel plated cover and gold plated phosphor bronze contact pins. Suitable for cable diameters between 6 and 8.5mm, whilst the strain relief is provided by the compression nut on the back of the connector. IDC termination accepts wire guages 22~26AWG. Two different wire managers are provided, one for 22~23AWG wires and the other for 24~26AWG wires. The connector is IP20 rated and 360° degrees shielding for greater tolerances to EMI/EMC. Designed and engineered for site termination and installation ease.



Technical Specifications	
Part #:	P1R45M-C6AS-BK
Performance category	CAT6a
Applications standard	ANSI/TIA-568-C.2 IEC 60603-7-51 ISO/IEC 11801 2.2 Edition CENELEC 50173-1:2011
Application support	10Base-T to 10GBase-T
Housing material	Polycarbonate(PC)
UL flammability rating	UL94V-0 [RoHS Compliant]
Contact type	Three prong for solid/stranded wires
Contact material	Gold over Nickel plating
Contact plating	Gold Plating 50μ [1.27μm]
Housing colour	White connector / Black outer case
Shield type	Shielded
Wire-Holder	PBT+10% GF
Plug-Contact	T=0.35mm Phosphor Bronze
Contact Area	Gold over Nickel Plating
IDC Contact	T=0.4mm Phosphor Bronze, Sn over Nickel Plating
Shielded Base	T=0.5mm Brass, Nickel Plating
Shielded Cover	T=0.3mm Phosphor Bronz, Nickel Plating
Operating temperature	-40° to 70°C
Current rating	1.5Amps
Dielectric withstanding voltage	1000Volts AC RMS 60Hz, 1 minute
Contact resistance	≤ 20mΩ @ 100mA max. 50mV max.
Insulation resistance	≥ 500MΩ @500V DC
Insertion/Extraction cycles	≥ 1000 mating cycles
Cable to Connector Tensile Strength	9kg (20lbs) (89N) min.
Wire gauge min/max	min: 0.92mm Ø max: 1.28mm Ø
Conductor diameter min/max	min: 0.405mm Ø (26AWG) max: 0.641mm Ø (22AWG)
Maximum cable jacket diameter	6.0 - 8.5mm ODØ
Packaging	
Packaging type for each conector	PE Bag
Items per box	10 pcs
Box size	150mm[w] x 110mm[d] x 70mm[h]
Master carton box	28 Inner boxes
Master carton size	485mm[w] x 365mm[d] x 230mm[h]
Recommended tool	
Model No.	NO TOOL REQUIRED